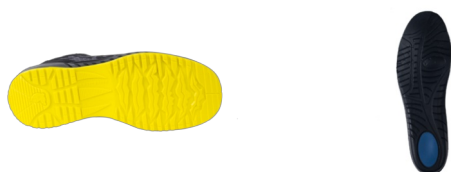


Ref. 9SWIL10

Multipurpose

Low

Low shoes



The +

- *Soft PU/PU outsole: cushioning and comfort.
- *Raised heel: stability on ladders.
- *Wide cleats and flex lines: optimized adaptability to the ground.
- *Polyester upper mesh: excellent breathability (laboratory tested).

PURCHASE PACKAGING

Ref.	Size	Carton
9SWIL10035	35	6
9SWIL10036	36	6
9SWIL10037	37	6
9SWIL10038	38	6
9SWIL10039	39	6
9SWIL10040	40	6
9SWIL10041	41	6
9SWIL10042	42	6
9SWIL10043	43	6
9SWIL10044	44	6
9SWIL10045	45	6
9SWIL10046	46	6
9SWIL10047	47	6
9SWIL10048	48	6

Some sizes may only be available in certain countries

DESCRIPTION

CLAW SWIFT is a lightweight, flexible and breathable safety sneaker. With a polyester upper and nubuck reinforcement, CLAW SWIFT ensures optimal breathability and durability in dry environments. Its low density PU/PU outsole guarantees all day comfort. Its aluminum / composite protection system contributes to its sporty look.

SECTORS

Light Industries

Regional/public authorities

Maintenance

Construction - finishing work

DIY

Transport (excluding manufacturing) and logistics

Services and distribution

TECHNICAL FEATURES

Color	Yellow	Insole	PU Foam, removable, with shock absorber
Color 2	Black	Reinforcement location	Front
Upper	Polyester mesh	Lining	Breathable 3D mesh
Toecap	Aluminium	Defined heel	
Puncture resistant sole	Textile		
Midsole	PU		
Outsole	PU		

INSTRUCTION FOR USE AND STORAGE

Instructions for use

These shoes can be perfectly preserved. Before any use, effect of a visual inspection is perfect. It is advisable to choose the appropriate model for the specific requirements of your workplace.

Storage instructions

Place the shoes, when not in use, in a dry, clean and airy place. The time influences all materials and even if only first class raw materials have been used, storage for longer than 3 years is not recommended.

Washing instructions

Regularly clean the shoes by using brushes, cleaning clothes, the operation frequency should be stated according to the workstation and carry out a periodic upper treatment with an adequate gloss containing grease, wax, silicone, etc

STANDARD(S)

This shoe conforms to the personal protective equipment model covered by the EC type-examination certificate **0075/1747/161/07/22/1303 EXT 02/07/22**

Delivered by CTC (0075) 4 rue Hermann. Frenkel 69367 Lyon Cedex 07 France



EPI CAT. II

EN ISO 20345:2011

S1P

Safety shoes

S1P Basic requirements: a 200 Joule impact and 15 000 Newton compression resistant toe-cap + Closed heel + Antistatic shoe 0,1M? A < 1000 M? + Fuel and oil resistant contact outsole + Energy absorbing heel E ? 20 Joules + Puncture resistant midsole / Resistant to a 1 100 Newtons pressure

SRC

Slip resistant outsole on ceramic or steel floor with dilute soap solution or glycerol

ESD

Electrostatic discharge shoe (CEI EN 61340-4-3 standard)

COVERPERF - Breathability



Shoes tested in a certified laboratory (CTC) offering excellent breathability. Removal of perspiration above 4g/h.

COVERPERF - Damping



Shoes tested in a certified laboratory (CTC) offering excellent damping. Over 25% of the impact force is absorbed by the sole.

RETAILER STAMP

MAJ 31/08/2022